

NİHAVEND FANTEZİ

Usûlü: SOFYAN

Müzik : TURHAN TAŞAN

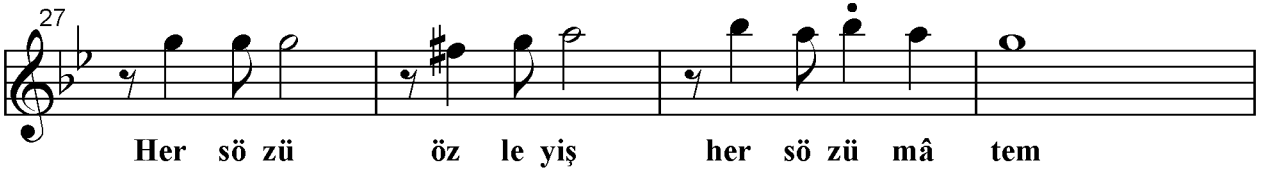
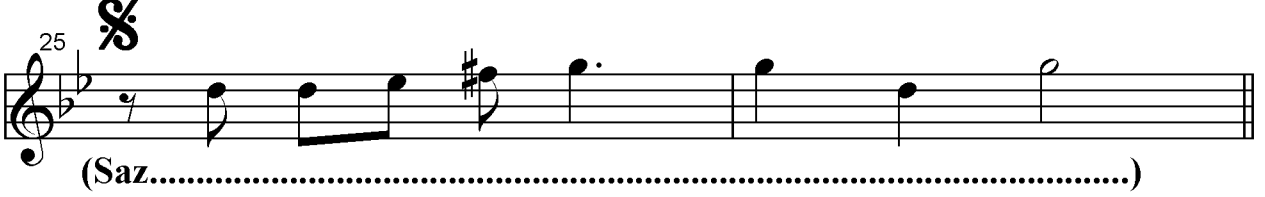
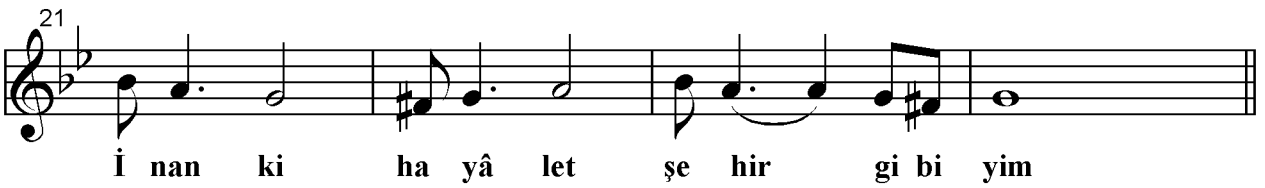
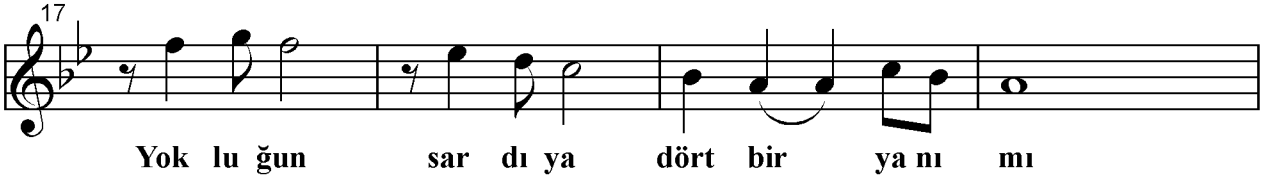
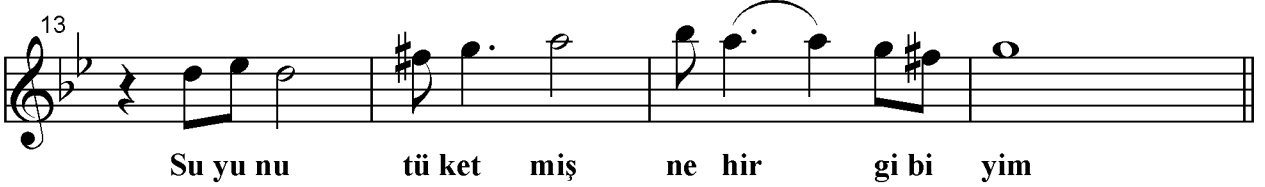
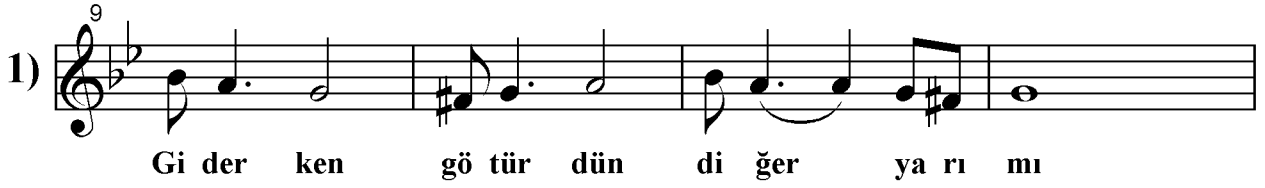
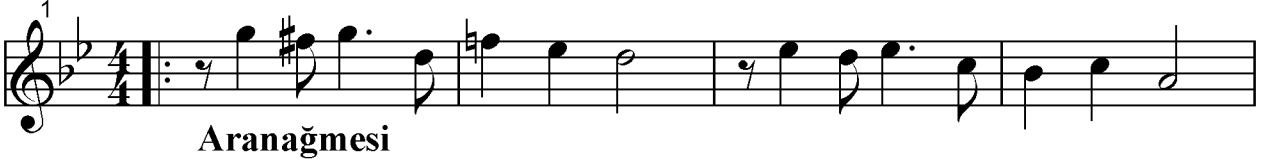
Söz : NİHAT TUNA

(Beste : Kurtköy / Pendik-İstanbul;
01 Eylül 2022 / Perşembe)

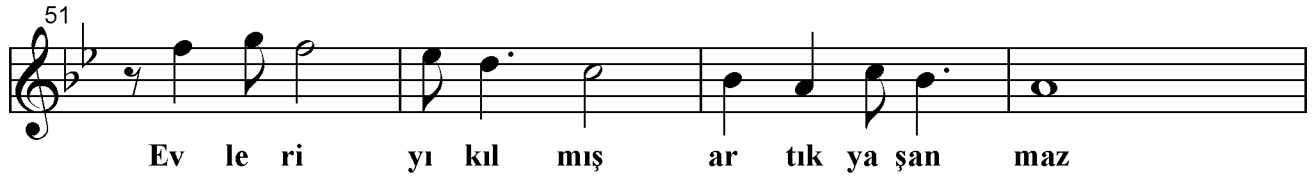
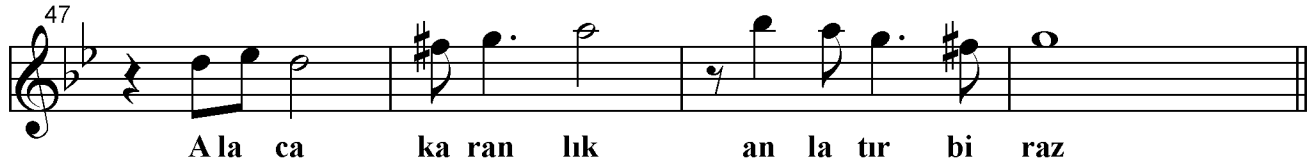
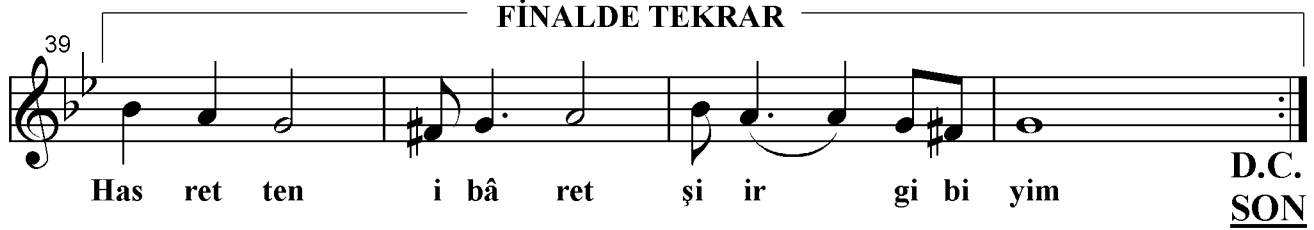
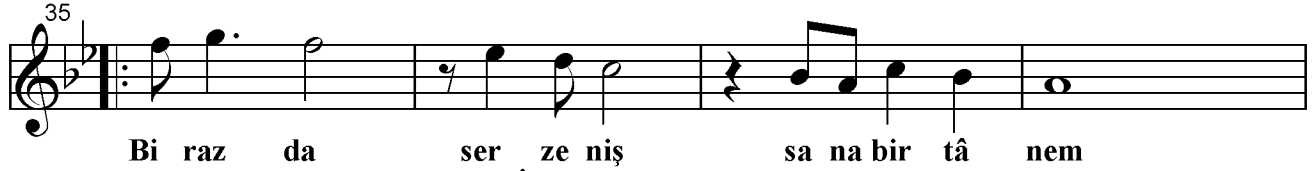
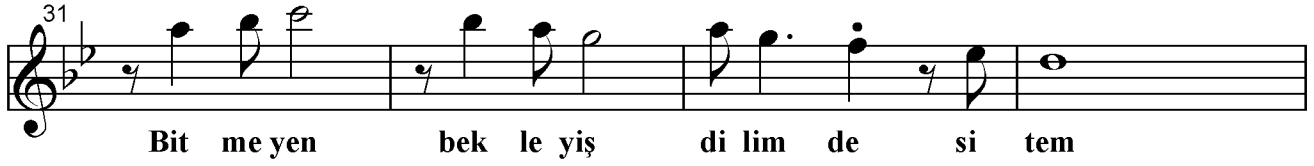
♩=100

Süre:04'.37"

GİDERKEN GÖTÜRDÜN DİĞER YARIMI



Giderken Götürdün Diğer Yarımı



Turhan
Taşan

- 1 -

GİDERKEN GÖTÜRDÜN DİĞER YARIMI
SUYUNU TÜKETMİŞ NEHİR GİBİYİM
YOKLUĞUN SARDI YA DÖRT BİR YANIMI
İNAN Kİ HAYALET ŞEHİR GİBİYİM

Nakarat:

HER SÖZÜ ÖZLEYİŞ, HER SÖZÜ MÂTEM
BİTMEYEN BEKLEYİŞ, DİLİMDE SİTEM
BİRAZ DA SERZENİŞ SANA BİR TÂNEM
HASRETTE İBARET ŞİİR GİBİYİM

- 2 -

BİR YANIM SİMSİYAH, BİR YANIM BEYAZ
ALACA KARANLIK ANLATIR BİRAZ
EVLERİ YIKILMIŞ, ARTIK YAŞANMAZ
İNAN Kİ HAYALET ŞEHİR GİBİYİM

(Nihat TUNA)